

*Reliable, Trustable,
Responsible.*

Reliable

Reliable quality products

Trustable

We put our reputation

Responsible

What we promise what we do.

We believe, we can, we just do it.



**Economic and Eco-friendly
Safe and Efficient**



sketch 1

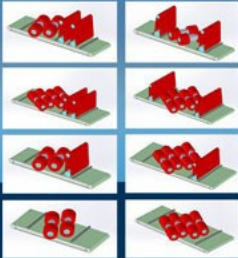
UNIVERSAL ROLLER BRUSH
DEBURRING MACHINE

LSP series is single or multi
workpiece combined grinding
machine.

The equipment can realize
one-time deburring processing
of metal plate laser cutting,
shearing, stamping, and
other machining.

It is suitable for metal plate
surface pre grinding, hole,
edge fillet deburring and
surface drawing.

For coated sheet, galvanized
sheet can be deburred without
damage.



sketch 2



Suzhou Goodwill Machinery Equipment Co., Ltd.

Add: No. 21 Xiexin Road, New District, Suzhou City, Jiangsu Province, China.

Mobile/WhatsApp: +86-173 7273 9851

Tel: +86-0512-65580060

Email: info@goodwillme.cn

Web: www.goodwillma.com

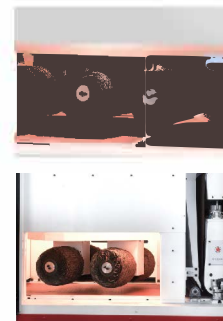


Goodwill focus on grinding technology,
One-stop solution for
your grinding requirement.

DEBURRING AND CHAMFERING MACHINES

LSP-SERIES

Universal rolling brush deburring surface drawing
Chamfering



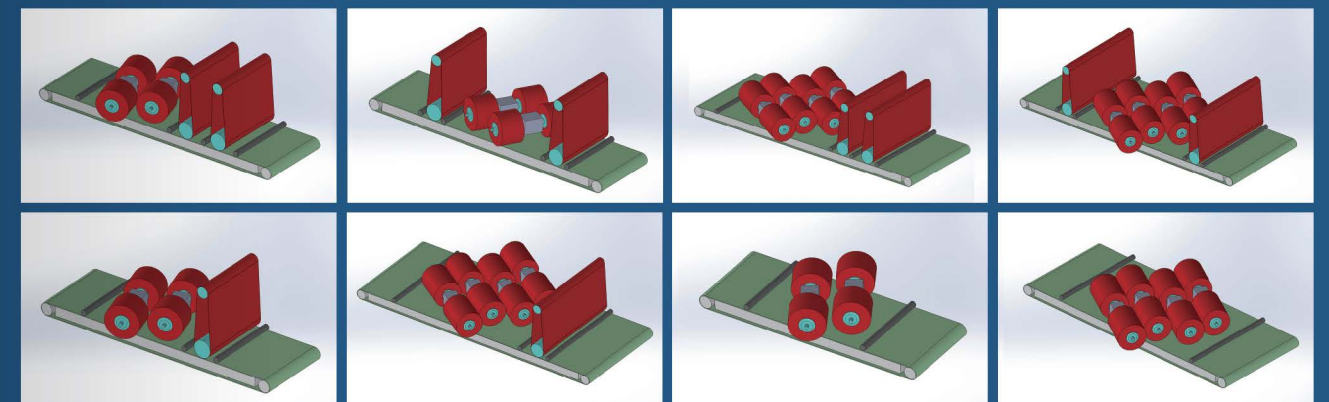
EQUIPMENT CONFIGURATION

- Processing width of equipment: 800mm, 1000mm, 1350mm, 1600mm
- Processing thickness of equipment: 0.5–100 mm
- Feeding speed :0.5–8 m/min(variable frequency adjustable)
- Optional feeding mode
 1. Strong permanent magnet adsorption transport feed (suitable for carbon steel workpieces. Workpiece size $\geq 10 \text{ mm} \times 10 \text{ mm}$)
 2. Vacuum negative pressure adsorption conveying feeding (suitable for stainless steel plate, copper plate, aluminum plate, etc.)
is not magnetically adsorbed. workpiece size $\geq 50 \text{ mm} \times 50 \text{ mm}$)
- Four-column synchronous lifting, rolling brush position independent lifting, lifting servo control, accuracy 0.01 mm
- Machine NC PLC touch screen adjustment processing parameters
- Matching wet vacuum cleaner or industrial pulse vacuum cleaner to treat grinding dust to achieve environmental protection production



PRODUCT SCOPE OF APPLICATION

- Applicable scope of equipment: suitable for flat plate parts, carbon steel plate, stainless steel plate, aluminum plate, copper plate, titanium alloy, all kinds of non-ferrous metals, rubber and plastic materials
- Equipment function: pre-grinding, drawing, polishing, scratching, deburring, chamfering, etc. for laser cutting, shearing, punching, cutting, plasma cutting
- Equipment combination: wide abrasive belt + universal roller brush single or multiple combination structure



LSB-SERIES

Medium plate/slagging / deburring / chamfering



EQUIPMENT CONFIGURATION

- Equipment processing width :800 mm;1000mm; 1350mm ; 1600mm ;2000m; 2200mm

- Equipment processing thickness : 1-100 mm

- Optional feeding mode
- Rubber roller+ rubber roller clip feeding
- Conveyor belt+ rubber roller clip feeding (for ordinary



workpieces. Workpiece length 150 mm

Strong permanent magnet adsorption conveying material for carbon steel workpieces. Workpiece size 10 x 10 mm

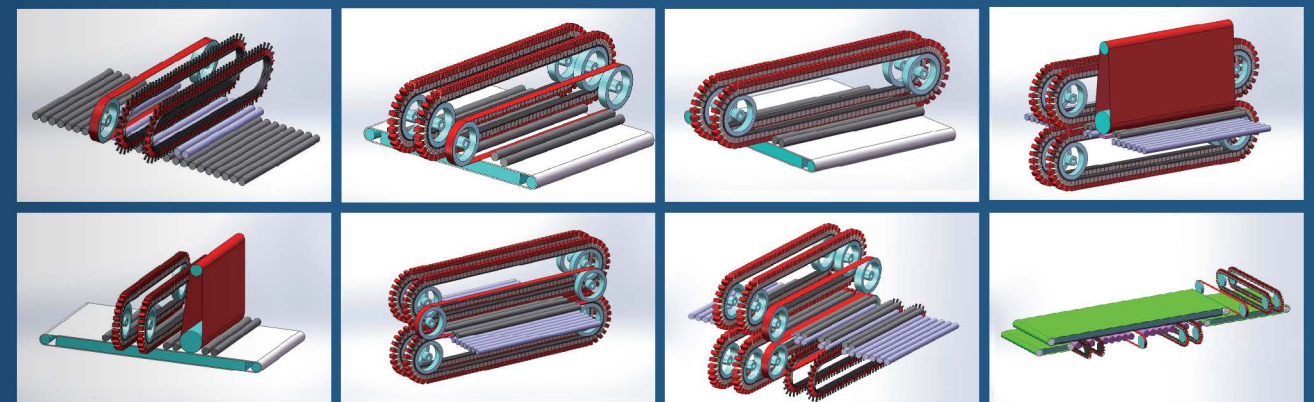
Vacuum negative pressure adsorption conveying feeding (for stainless steel plate, copper plate, aluminum plate, etc.) Is not magnetically adsorbed workpiece size 50x 50 mm

产品适用范围

LSB系列设备包含宽幅砂带/窄带砂带和磨料带单面或双面多工位组合磨削多功能机型。设备可以实现一次通过式加工单面或者双面全方位均匀去除金属板材激光切割、剪切下料、等离子切割、火焰切割、冲压下料、机加工等形成的熔渣毛刺等。适用于金属板材表面预磨，孔洞、棱边倒圆角去毛刺以及表面拉丝等加工工艺。

PRODUCT SCOPE OF APPLICATION

LSB series includes wide/narrow sand belt and abrasive belt (single or double-sided multi-station combined grinding multi-function). The equipment can realize the uniform removal of slag burr formed by laser cutting, shearing cutting, plasma cutting, flame cutting, stamping cutting, machining and so on. Suitable for sheet metal surface pre-grinding, hole, edge corner deburring and surface drawing process.



LSD-SERIES

Fine blanking parts / wet deburring / chamfering



PRODUCT SCOPE OF APPLICATION

- Application scope of equipment: suitable for precision stamping parts, gear parts, auto parts, powder metallurgy parts, machine-added workpiece products, etc
- Equipment function: the workpiece edge, hole deburring treatment, so that the workpiece surface consistent, all edge holes to achieve a uniform R arc
- Equipment combination: single or multiple combination structures of abrasive belt grinding station + disk brush grinding station

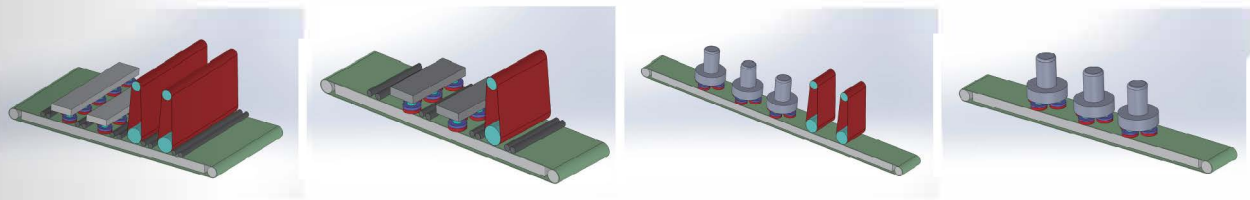
TECHNICAL PARAMETER

| 设备加工厚度 Processing thickness | 砂带线速度 Belt linear speed | 盘刷自转速度 Brush speed | 盘刷公转速度 disk brush rotation speed | 盘刷组合摆动频率 brush combined swing frequency | 输送送料速度 Feed speed |
|--------------------------------|----------------------------|-------------------------|-------------------------------------|--|------------------------|
| 1-100mm | 18m/s (可选变频调速) | 3000r/min (可选变频调速) | 150r/min (可选变频调速) | 120-280次/min (可选变频可调) | 0.5-6m/min (变频可调) |

PROCESSING WIDTH OF EQUIPMENT

- Processing width of equipment :300 mm 400mm 650mm 1050mm 1350mm

1. 300 mm width machine consists of three planetary arrangement brushes, single brush automotates and the whole brush combinat1on revolves
2. 400mm width machine consists of four planetary arrangement brushes, single brush automotates and the whole brush comb1nat1on revolves
3. 650 mm width machine consists of five interlaced disk brushes, two ad1acent disk brushes are rotated forward and backward, and the whole disk brush comb1nat1on swings horizontally 1n the vertical d1rect1on of the feed
4. 1050mm width machine l consists seven interlaced disk brushes, two ad1acent disk brushes are rotated forward and backward, and the whole disk brush comb1nat1on swings horizontally 1n the vertical d1rect1on of the feed
5. 1350mm width machine 1s composed of nine interlaced disk brushes, two ad1acent disk brushes are rotated forward and backward, and the whole disk brush comb1nat1on swings horizontally 1n the vertical d1rect1on of the feed



OPTIONAL FEEDING:

1. Conveyor belt+ rubber roller clp feedng (for ordinary workpieces. Workpiece length ?c480 mm)
 2. Strong permanent magnet adsorption conveying material for carbon steel workpieces. Workpiece size ;a, 10 mm x 10 mm)
 3. Vacuum negative pressure adsorption conveying feedng (for stainless steel plate, copper plate, aluminum plate, etc.) 1s not magnetically adsorbed Workpiece size ;a, 50 mm x 50 mm)
- Four-column synchronous l1ft1ng, l1ft1ng height d1g1tal setting and reading, unit: mm
 - The equipment 1s supplied with grindng flu1d by sprinkler pipes at each station. The magnetic adsorption outlet 1s equipped with demagnetizing device to demagnetize the workpiece
 - Automatic paper tape f1lter 1s used to f1lter grindng dust to prov1de grindng cycle grindng flu1d to ach1eve environmental protection production
 - Advantages of wet processing
 - The service l1fe of wet processing consumables 1s longer

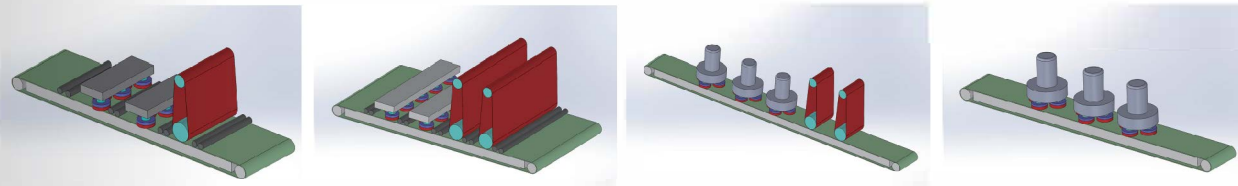
LSD-SERIES

Dry deburring / drawing / polishing / chamfering



PROCESSING WIDTH OF EQUIPMENT

1. 300 mm width machine consists of three planetary arrangement brushes, one of which rotates and the whole brush is rotated
2. 400 mm width machine consists of four planetary arrangement brushes, a single disk brush rotates, and the whole disk brush group rotates
3. 650 mm width machine consists of 5 interlaced disk brushes, two adjacent disk brushes are rotated forward and backward, and the whole disk brush combination swings horizontally in the vertical direction of the feed
4. 1050mm width machine is composed of seven interlaced disk brushes, two adjacent disk brushes are rotated forward and backward, and the whole disk brush combination swings horizontally in the vertical direction of the feed
5. 1350 mm width machine is composed of nine interlaced disk brushes, two adjacent disk brushes are rotated forward and backward, and the whole disk brush combination swings horizontally in the vertical direction of the feed



PRODUCT SCOPE OF APPLICATION

Application scope of equipment: suitable for precision stamping parts, gear parts, auto parts, powder metallurgy parts, machine-added workpiece products, etc

Equipment function: the workpiece edge, hole deburring treatment, so that the workpiece surface consistent, all edge holes to achieve a uniform R arc

Equipment combination: single or multiple combination structures of abrasive belt grinding station + disk brush grinding station

TECHNICAL PARAMETER

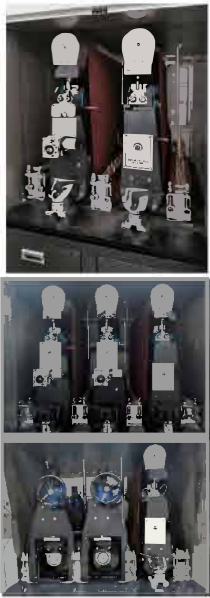
| 设备加工厚度 Processing thickness | 砂带线速度 Belt linear speed | 盘刷自转速度 Brush speed | 盘刷公转速度 Disk brush rotation speed | 盘刷组合摆动频率 Brush combination swing frequency | 输送送料速度 Feed speed |
|--------------------------------|----------------------------|-----------------------|-------------------------------------|---|----------------------|
| 1-100mm | 18m/s (可选变频调速) | 3000r/min (可选变频调速) | 150r/min (可选变频调速) | 120-280次/min (可选变频可调) | 0.5-6m/min (变频可调) |

OPTIONAL FEEDING:

1. Conveyor belt+ rubber roller clip feeding (for ordinary workpieces. Workpiece length 480 mm)
 2. Strong permanent magnet adsorption conveying material for carbon steel workpieces. Workpiece size 10 mm x 10 mm
 3. Vacuum negative pressure adsorption conveying feeding (for stainless steel plate, copper plate, aluminum plate, etc. Is not magnetically adsorbed Workpiece size ≥ 50 mm x 50 mm)
- Four-column synchronous lifting, lifting height digital setting and reading, unit: mm
 - The equipment is supplied with grinding fluid by sprinkler pipes at each station. The magnetic adsorption outlet is equipped with demagnetizing device to demagnetize the workpiece
 - Automatic paper tape filter is used to filter grinding dust to provide grinding cycle grinding fluid to achieve environmental protection production

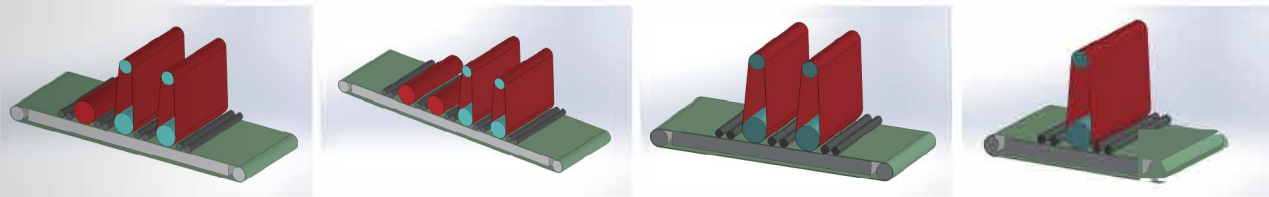
LSG-SERIES

Wet deburring / drawing / polishing



OPTIONAL FEEDING:

1. Conveyor belt + rubber roller clip feeding (for ordinary workpieces. Length of work piece ≥ 280 mm)
2. Strong permanent magnet adsorption conveying material for carbon steel workpieces. Workpiece size $\geq 10\text{ mm} \times 10\text{ mm}$
3. Vacuum negative pressure adsorption conveying feeding (for stainless steel plate, copper plate, aluminum plate, etc.) is not magnetically adsorbed. Workpiece size $\geq 50\text{ mm} \times 50\text{ mm}$)
4. The rubber roller + the rubber roller are clamped to feed the material. Workpiece length ≥ 280 mm)



产品适用范围

- 设备适用范围：适用于平板类零件，碳钢板、不锈钢板、铝板、铜板、钛合金、各类有色金属、橡塑材料、大理石等。
- 设备功能：适用于各类平板类零件表面拉丝、抛光、去划伤、去除纵向毛刺、去氧化皮、拉毛、定厚等加工等。
- 设备组合：砂带+抛光轮单个或者多个组合结构

PRODUCT SCOPE OF APPLICATION

- Applicable scope of equipment: suitable for flat plate parts, carbon steel plate, stainless steel plate, aluminum plate, copper plate, titanium alloy, all kinds of non-ferrous metals, rubber and plastic materials, marble and so on.
- Equipment function: suitable for all kinds of flat plate parts surface drawing, polishing, scratch removal, removal of longitudinal burr, oxidation skin, hair, fixed thickness and other processing.
- Equipment combination: single or multiple combination structure of sand belt + polishing wheel

技术参数 / TECHNICAL PARAMETER

| 设备加工厚度 Processing thickness of equipment | 砂带线速度 Belt linear speed | 抛光轮线速度 Polishing wheel line speed | 输送送料速度 Feeding speed |
|---|----------------------------|--------------------------------------|-------------------------|
| 1-80mm | 18m/s (可选变频调速) | 20m/s (可选变频调速) | 2-11m/min (变频可调) |

设备配置 / EQUIPMENT CONFIGURATION

- 设备加工宽度：350mm、650mm、800mm、1050mm、1350mm、1600mm、1900mm、2200mm
- 四柱式同步升降，升降高度数字化设置和读数，单位mm
- 设备每个工位前后配喷淋水管提供磨削液，进出口配阻水辊防止磨削液飞溅，出口配上下风刀切水干燥，配三组挤水辊挤水。
- 配套自动纸带过滤机过滤磨削粉尘提供研磨循环磨削液，实现环保化生产。
- 湿式加工的优点：
 - 1、湿式加工工件冷态加工不易受热变形；
 - 2、湿式加工工件表面粗糙度更好；
 - 3、湿式加工磨削粉尘全部吸收，工作环境更好；
- 湿式加工耗材使用寿命更长。
- Width of equipment: 350mm、650mm、800mm、1050mm、1350mm、1600mm、1900mm、2200mm
- Four-column synchronous lifting, lifting height digital setting and reading, unit: mm
- The equipment is equipped with spray pipe to provide grinding fluid before and after each station, inlet and outlet water resistance roller to prevent grinding fluid spatter, outlet with upper and lower air knife cut water dry, with three groups of water extrusion roller water extrusion.
- Automatic paper tape filter is used to filter grinding dust to provide grinding cycle grinding fluid to achieve environmental protection production.
- Advantages of wet processing:
 1. Cold working of wet workpieces is not easily deformed by heat;
 2. Better surface roughness of wet workpieces;
 3. Wet grinding dust absorption, better working environment;
- The service life of wet processing consumables is longer.

LSG-SERIES

Dry deburring / drawing / polishing



EQUIPMENT CONFIGURATION

- Width of equipment: 350mm 650mm 800mm 1050mm 1350mm 1600mm 1900mm 2200mm
- Optional feeding mode
 1. Conveyor belt+ rubber roller clip feeding (for ordinary workpieces. Workpiece length ≥ 280 mm)
 2. Strong permanent magnet adsorption conveying materials for carbon steel workpieces. Workpiece size 10 mmx 10 mm)
 3. Vacuum negative pressure adsorption conveying feeding (for stainless steel plate, copper plate, aluminum plate, etc.) Is not magnetically adsorbed Workpiece size 50x 50 mm)
 4. The rubber roller+ the rubber roller are clamped to feed the material. Workpiece length 280 mm)
- Four-column synchronous lifting, lifting height digital setting and reading unit: mm
- Equipped with wet vacuum cleaner or industrial pulse vacuum cleaner to treat grinding dust to achieve environmental protection production

产品适用范围

- 设备适用范围：适用于平板类零件，碳钢板、不锈钢板、铝板、铜板、钛合金、各类有色金属、橡塑材料、大理石、石墨等。
- 设备功能：适用于各类平板类零件表面拉丝、抛光、去划伤、去除纵向毛刺、去氧化皮、拉毛、定厚等加工等。
- 设备组合：砂带+抛光轮单个或者多个组合结构

PRODUCT SCOPE OF APPLICATION

- Application scope of equipment: suitable for flat plate parts, carbon steel plate, stainless steel plate, aluminum plate, copper plate, titanium alloy, all kinds of non-ferrous metals, rubber and plastic materials, marble, graphite, etc.
- Equipment function: suitable for all kinds of flat plate parts surface drawing, polishing, scratch removal, removal of longitudinal burr, oxidation skin, hair, fixed thickness and other processing.
- Equipment combination: single or multiple combination structure of sand belt + polishing wheel

技术参数 / TECHNICAL PARAMETER

| 设备加工厚度 Processing thickness of equipment | 砂带线速度 Belt linear speed | 抛光轮线速度 Polishing wheel line speed | 输送送料速度 Feeding speed |
|---|----------------------------|--------------------------------------|-------------------------|
| 1-80mm | 18m/s (可选变频调速) | 20m/s (可选变频调速) | 2-11m/min (变频可调) |

